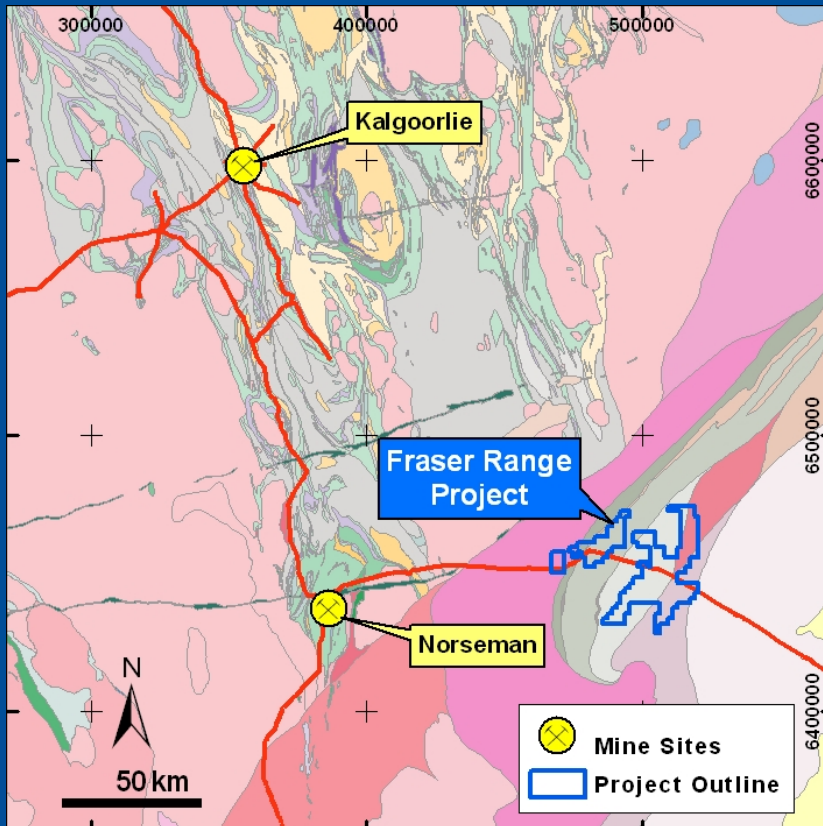
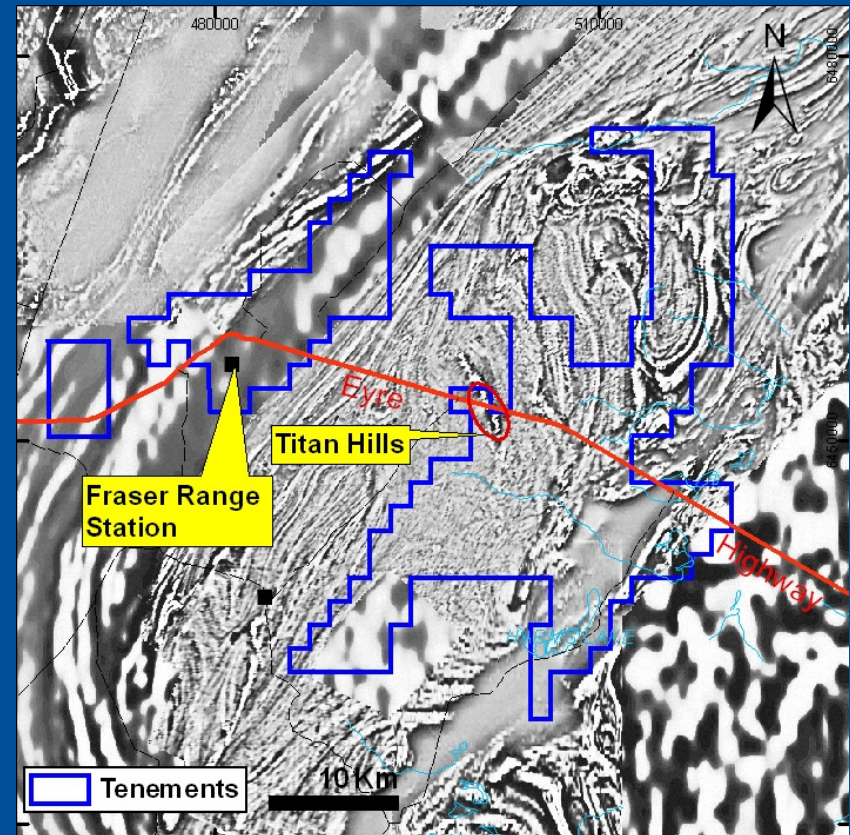


Fraser Range Project (100%) **Fe, Ti, Au**

Geology



Magnetics



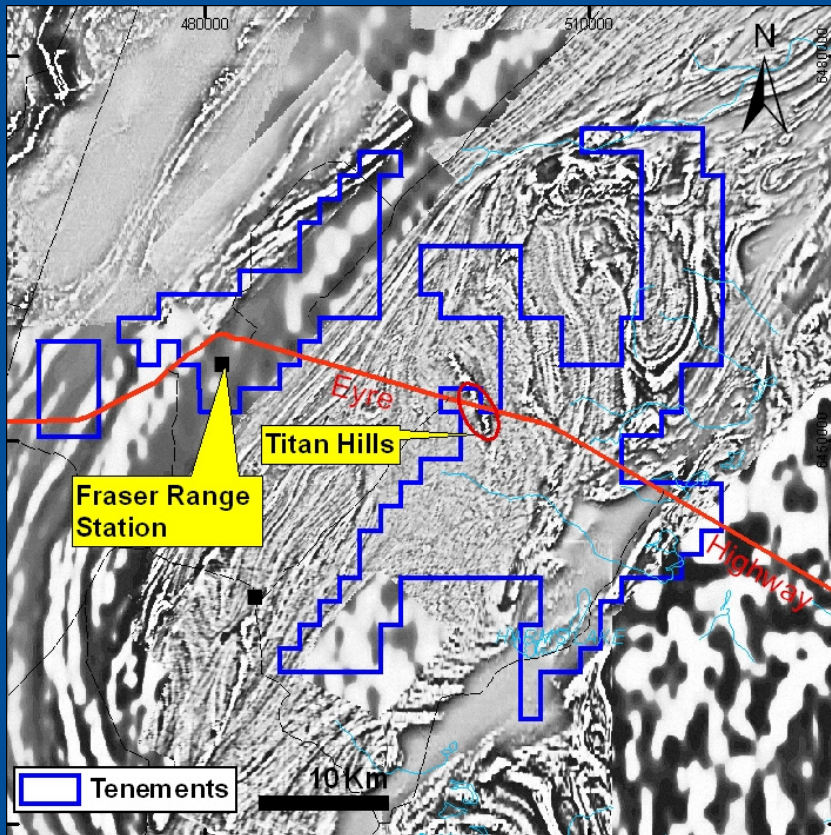
Target: Magmatic Titaniferous Iron Deposit in Proterozoic metamorphic rocks

- Also potential for shear hosted Gold deposits (cf Tropicana) and Ni/Cu – PGE's
- Tenements still in application, early stages

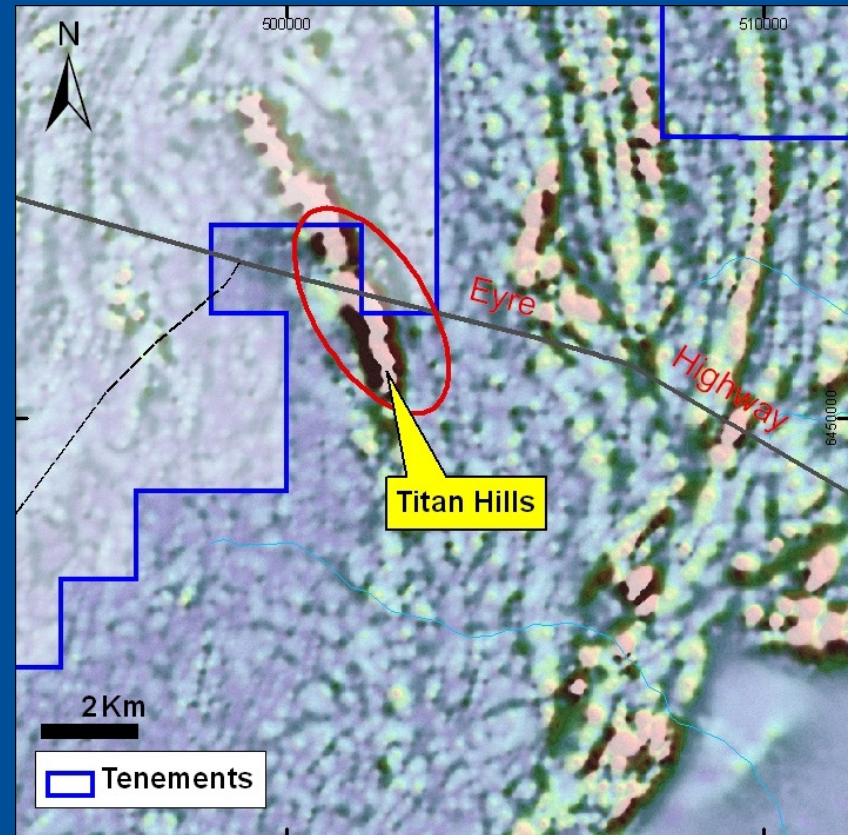
Fraser Range Project

Fe, Ti, Au

Magnetics



Titaniferous magnetite



- Aeromagnetics define 7,000m long anomaly, 3,500m on Company tenement
- Rock chips by previous explorers: max 38% TiO₂
- Tenements still in application, early stages